

29. maí 2017

Vikubyrjun – Innlendar markaðsupplýsingar

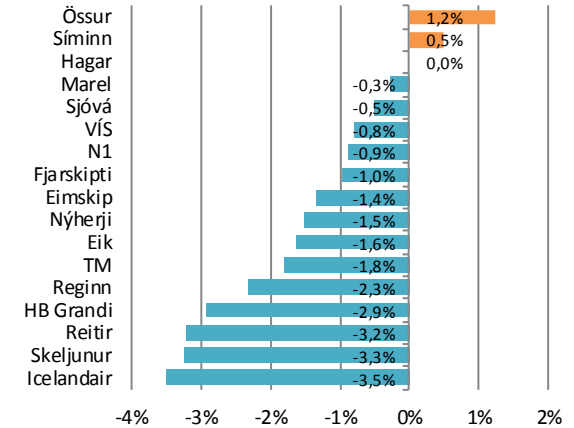
Hagfræðideild Landsbankans



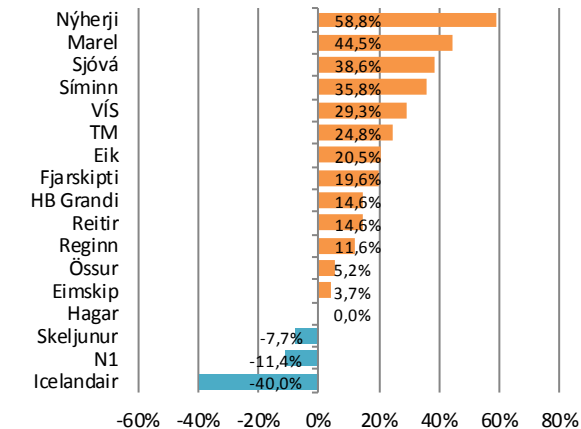
Hlutabréf

Félag	Verð	Velta (ma.kr./viku)	Breyting síðan ...					
			áramót	1V	1M	3M	6M	12M
OMX18	1849,71	8,0	8,1%	-1,2%	2,8%	7,0%	7,0%	2,8%
OMX18GI	2089,56		9,4%	-1,2%	2,8%	8,2%	8,2%	4,0%
Marel	351,00	0,9	44,5%	-0,3%	1,6%	9,2%	43,6%	40,7%
Icelandair	13,75	0,6	-40,0%	-3,5%	3,0%	-10,6%	-42,4%	-57,6%
Össur	410,00	0,0	5,2%	1,2%	2,2%	6,5%	7,4%	-10,4%
Eimskip	327,50	1,0	3,7%	-1,4%	1,6%	5,5%	-0,9%	39,1%
HB Grandi	29,80	0,1	14,6%	-2,9%	-6,0%	-3,1%	13,1%	-14,4%
Hagar	54,00	1,4	0,0%	0,0%	10,1%	13,4%	2,0%	15,8%
N1	111,50	0,9	-11,4%	-0,9%	-5,5%	-13,1%	-11,7%	25,6%
Skeljunur	6,25	0,1	-7,7%	-3,3%	-3,4%	5,9%		
Fjarskipti	61,00	0,2	19,6%	-1,0%	-0,3%	19,4%	33,0%	40,6%
Síminn	4,22	0,8	35,8%	0,5%	7,4%	23,6%	36,9%	35,4%
Nýherji	32,40	0,0	58,8%	-1,5%	12,1%	5,9%	64,1%	94,0%
Sjóvá	18,90	0,1	38,6%	-0,5%	0,0%	18,4%	40,3%	73,8%
VÍS	11,24	0,2	29,3%	-0,8%	5,6%	24,2%	29,8%	47,7%
TM	32,70	0,1	24,8%	-1,8%	-1,5%	12,4%	27,0%	72,0%
Reginn	29,25	0,3	11,6%	-2,3%	1,3%	8,9%	14,0%	33,0%
Reitir	105,50	0,6	14,6%	-3,2%	2,9%	18,1%	16,8%	26,9%
Eik	12,60	0,7	20,5%	-1,6%	2,3%	18,5%	23,4%	47,0%

Breyting í vikunni

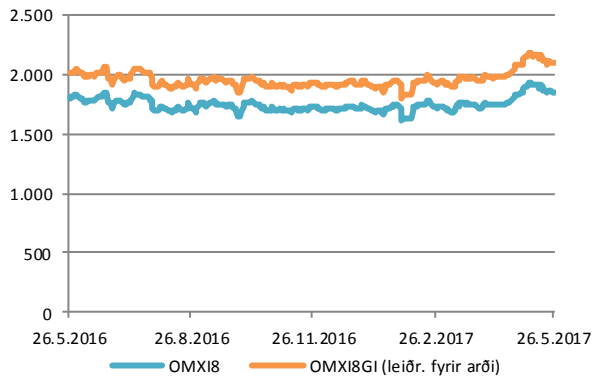


Síðan áramót

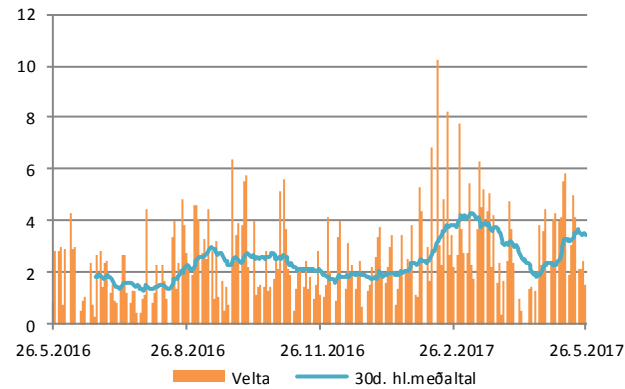


Leiðrétt fyrir arðgreiðslum. Heimild: Kodiak, útreikningar Hagfræðideildar

Úrvalsvísitalan



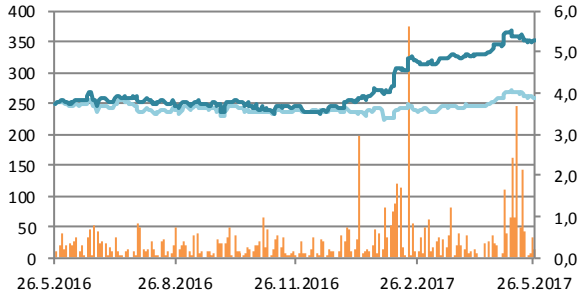
Velta



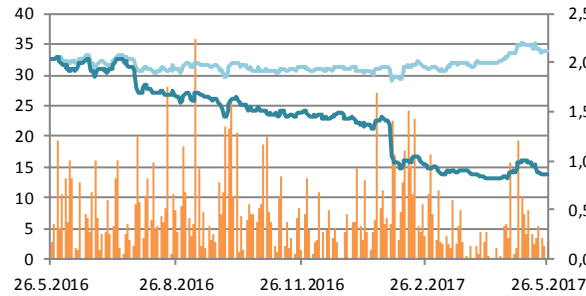
Hlutabréf

Velta (h.ás, ma.kr./dag) Verð OMXI8GI

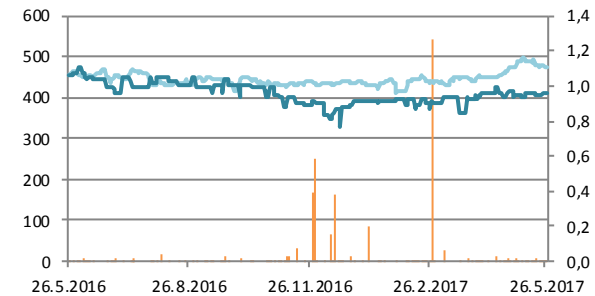
Marel



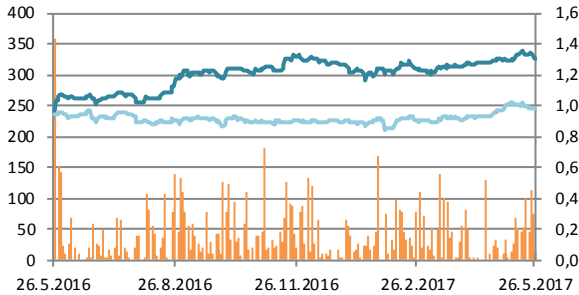
Icelandair



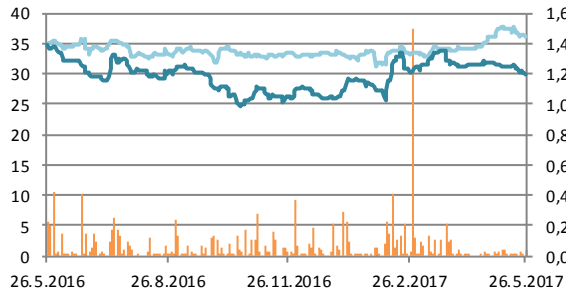
Össur



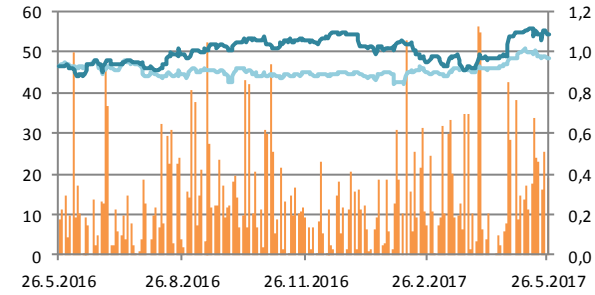
Eimskip



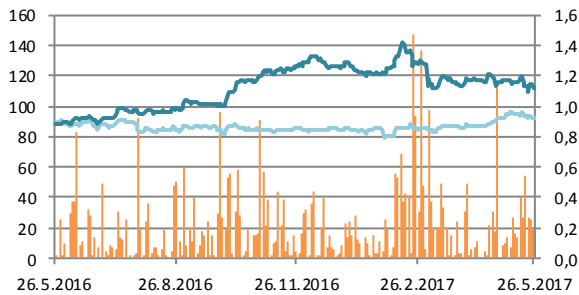
HB Grandi



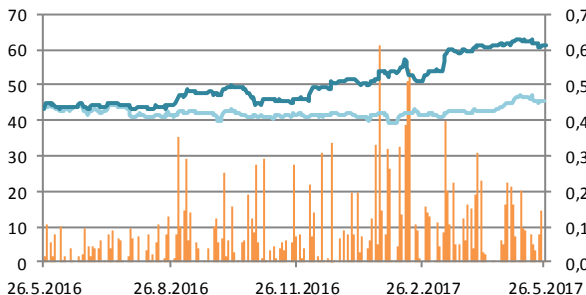
Hagar



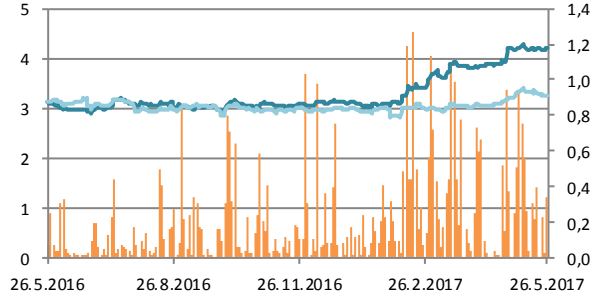
N1



Fjarskipti



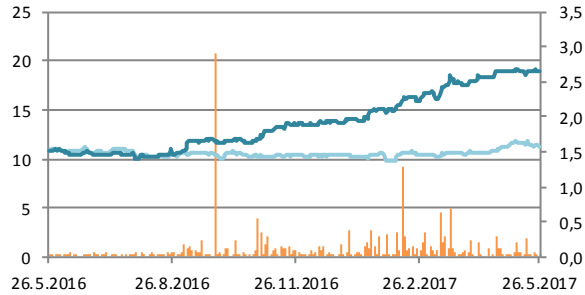
Síminn



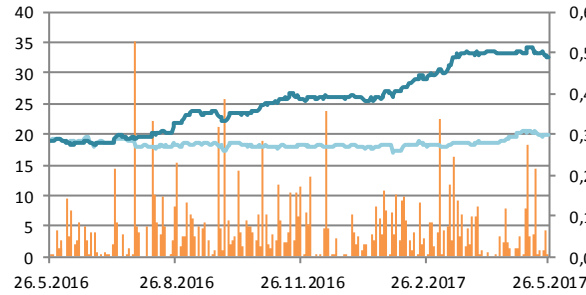
Hlutabréf

Velta (h. ás, ma.kr./dag) Verð OMXI8GI

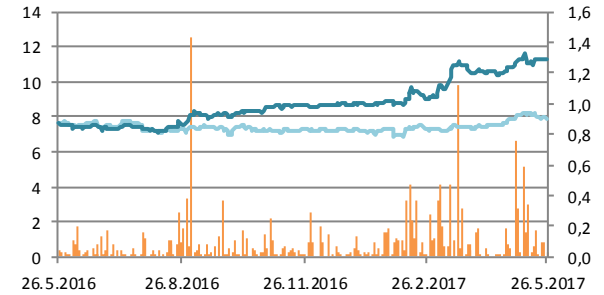
Sjóvá



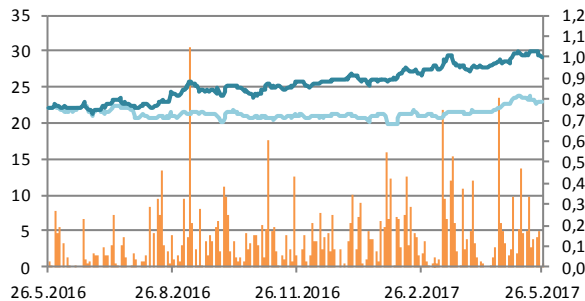
TM



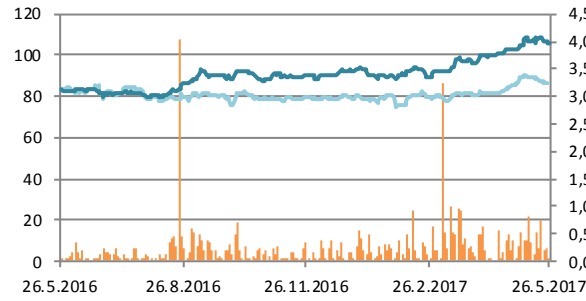
Vís



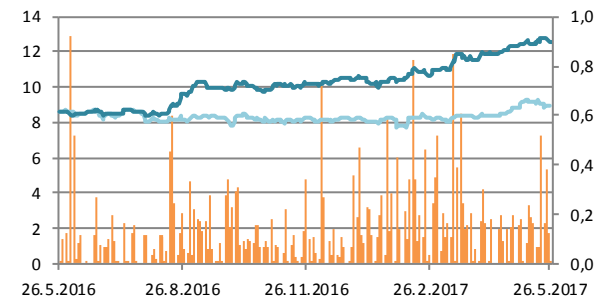
Reginn



Reitir



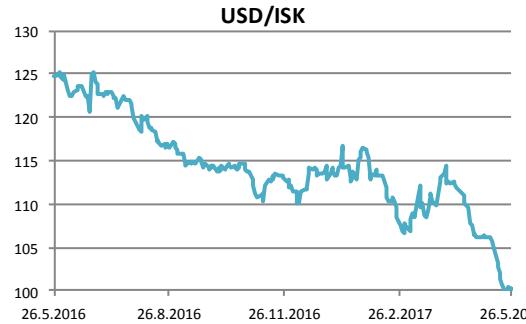
Eik



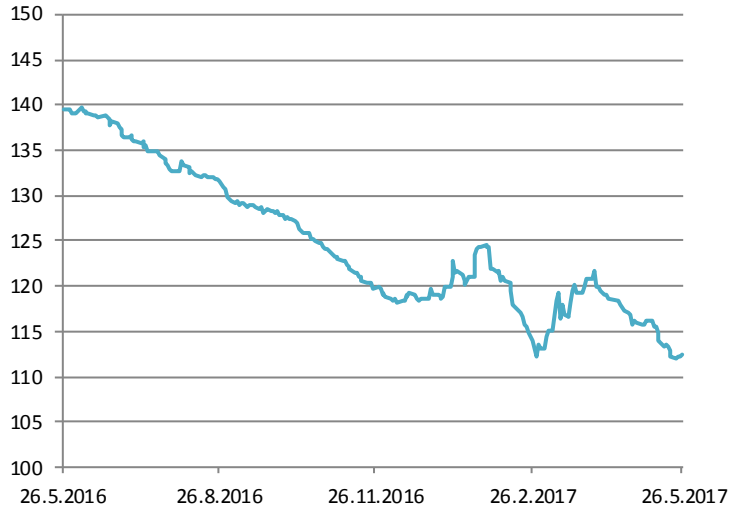
Gjaldeyrismarkaður

Gengi ISK	26.maí	Breyting síðan ...				
		1V	1M	3M	6M	12M
EUR	112,5	0,3%	-2,9%	-2,0%	-6,1%	-19,4%
USD	100,3	-0,3%	-5,8%	-7,5%	-11,4%	-19,6%
GBP	128,9	-1,3%	-5,5%	-5,3%	-8,5%	-29,7%
SEK	11,6	0,8%	-4,6%	-4,3%	-5,5%	-23,0%
DKK	15,1	0,3%	-2,9%	-2,1%	-6,2%	-19,5%
NOK	12,0	0,2%	-3,5%	-8,0%	-9,3%	-20,5%
CHF	103,3	0,5%	-3,4%	-4,1%	-7,4%	-18,0%
JPY	0,90	0,1%	-5,6%	-6,4%	-10,0%	-20,4%

Miðgengi Seðlabanka Íslands. Heimild: Kodiak



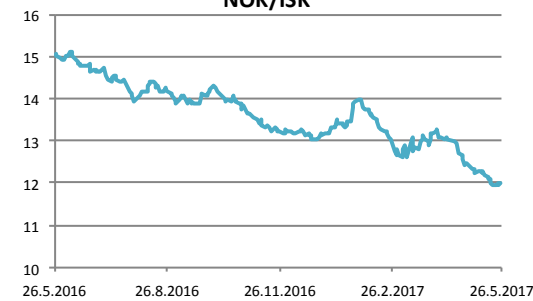
EUR/ISK



SEK/ISK



NOK/ISK



CHF/ISK



JPY/ISK

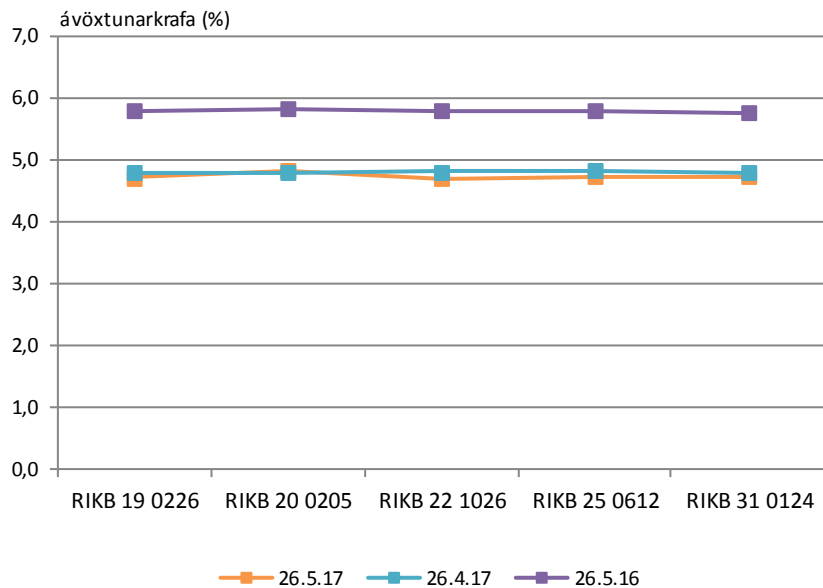


Ríkisbréf

	verð	krafa	velta (ma.kr./viku)	Breyting á kröfu síðan ...				
				1V	1M	3M	6M	12M
RIKB 19 0226	106,58	4,71	0,3	-0,06	-0,07	-0,25	-0,51	-1,07
RIKB 20 0205	103,50	4,82	2,5	0,03	0,03	-0,19	-0,46	-1,00
RIKB 22 1026	111,92	4,69	0,6	0,01	-0,10	-0,27	-0,54	-1,09
RIKB 25 0612	121,44	4,73	1,5	0,00	-0,08	-0,25	-0,52	-1,06
RIKB 31 0124	117,50	4,73	2,7	0,06	-0,06	-0,25	-0,46	-1,02
RIKS 21 0414	104,25	2,63	0,3	0,04	-0,07	-0,23	-0,28	-0,18

Heimild: Kodiak

Vaxtaferlar

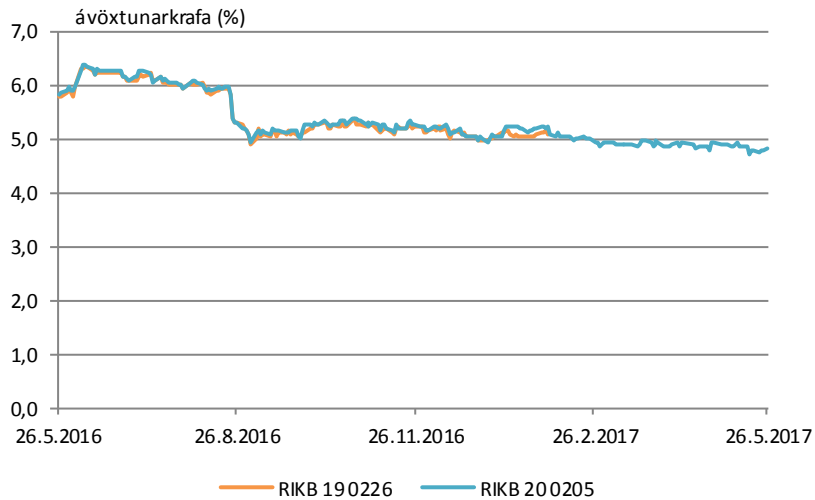


Verðbólguálag

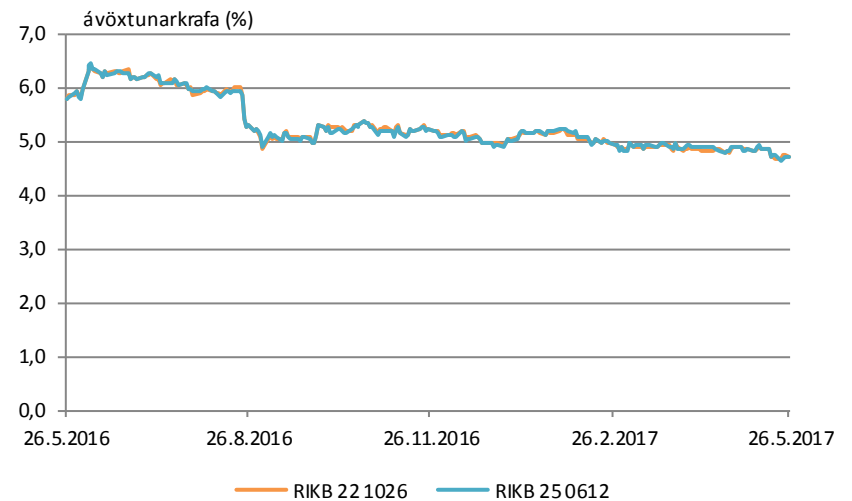


Ríkisbréf

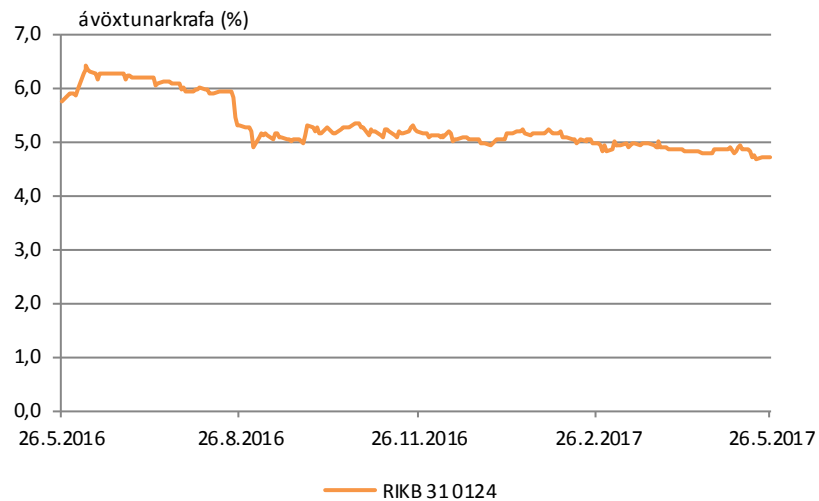
Stutt ríkisbréf



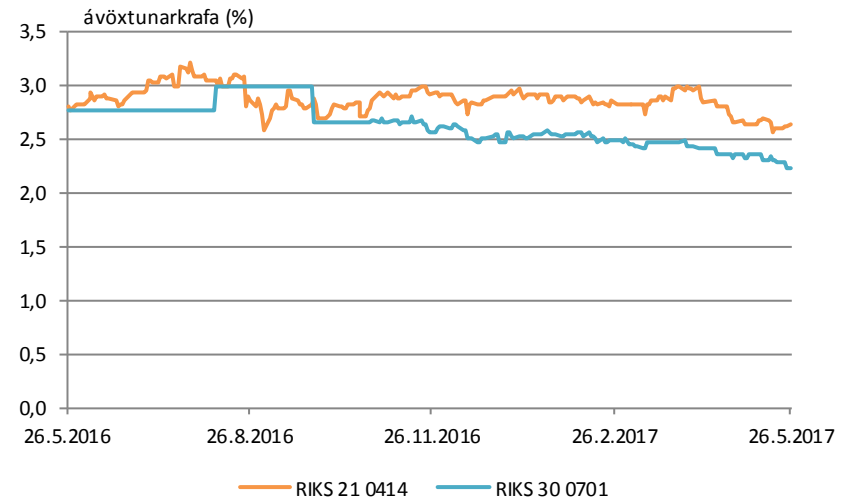
Millilöng ríkisbréf



Löng ríkisbréf



Verðtryggð ríkisbréf

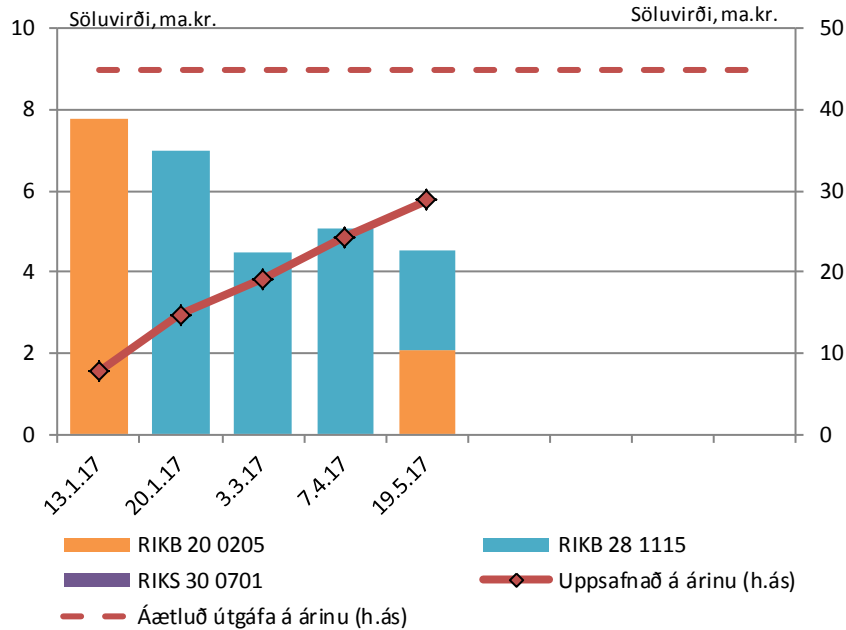


Útboð ríkisbréfa

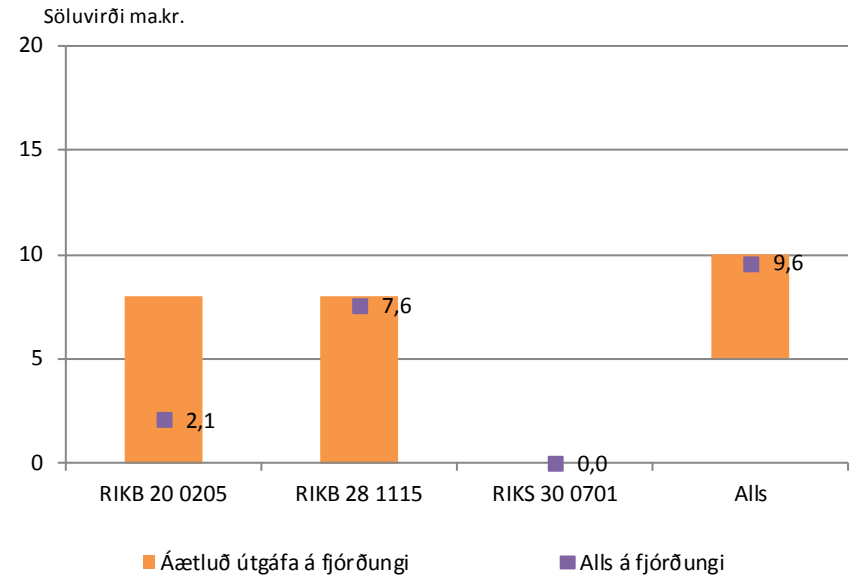
Seinustu útboð		Tilboð	Samþykkt	Verð	Krafa
Dags	Flokkur				
2.12.16	RIKS 30 0701	3,3	2,4	107,23	2,61
13.1.17	RIKB 20 0205	9,0	7,6	102,76	5,24
20.1.17	RIKB 28 1115	14,9	7,1	98,08	5,22
3.3.17	RIKB 28 1115	7,6	4,5	100,59	4,93
7.4.17	RIKB 28 1115	8,3	5,1	100,60	4,93
19.5.17	RIKB 20 0205	5,1	2,0	103,60	4,79
19.5.17	RIKB 28 1115	7,9	2,4	102,50	4,71

Að nafnvirði (ma.kr.) Heimild: Lánamál Ríkisins

Útboð á árinu m.v. ársáætlun



Útboð á 2. ársfj. m.v. ársfjórðungsáætlun

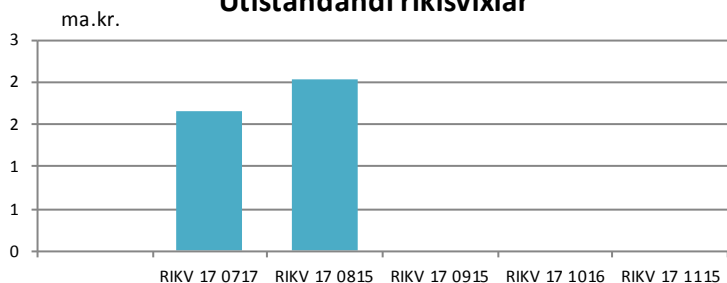


Útboð ríkisvixla

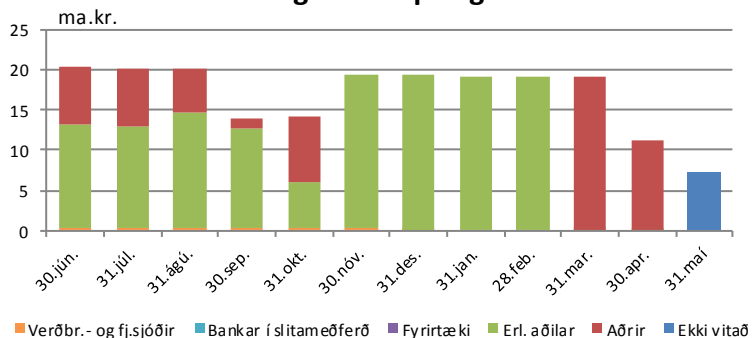
dags	3 mán. víxl			6 mán. víxl		
	Tilboð	Samþykkt	Krafa	Tilboð	Samþykkt	Krafa
13.12.16						
12.01.17				1,9	1,7	0,68
13.02.17				2,0	2,1	0,70
13.03.17				0,2	0,0	
11.04.17				0,4	0,0	
11.05.17				3,7	3,5	4,95

Heimild: Lánamál Ríkisins

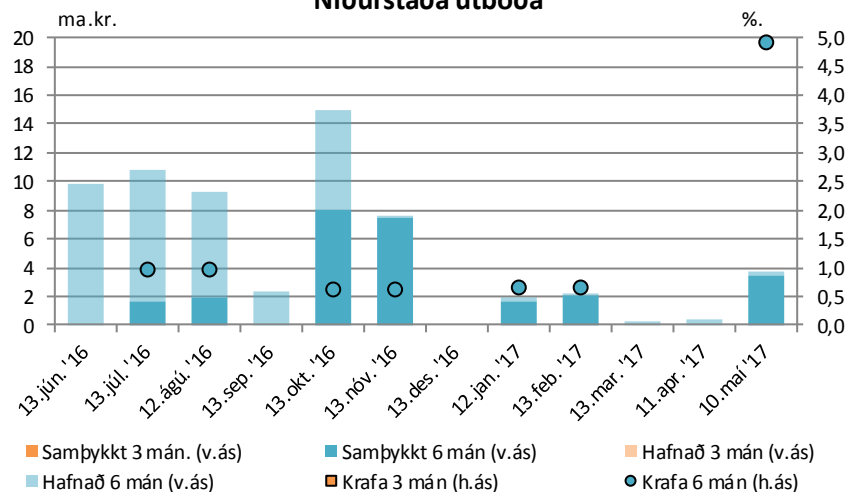
Útistandandi ríkisvixlar



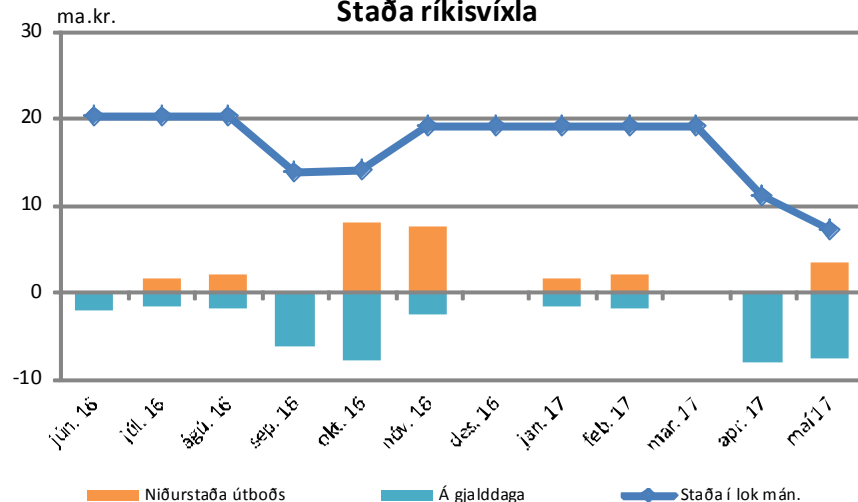
Eigendaskipting



Niðurstaða útboða



Staða ríkisvixla



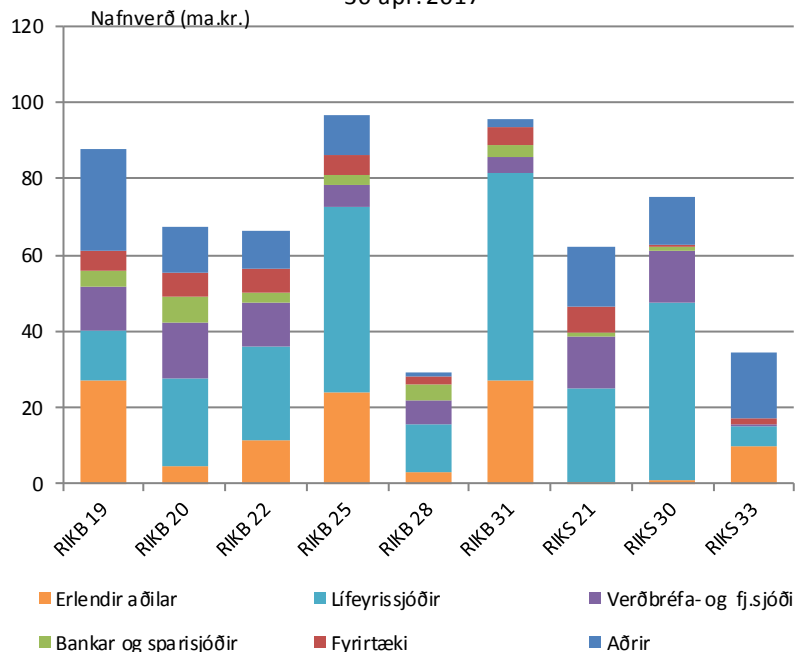
Eigendaskipting ríkisbréfa

	Eigendaskipting (ma.kr.)									Alls
	RIKB 19	RIKB 20	RIKB 22	RIKB 25	RIKB 28	RIKB 31	RIKS 21	RIKS 30	RIKS 33	
Erlendir aðilar	26,9	4,3	11,1	24,0	2,9	27,0	0,5	1,1	9,7	107,6
Lífeyrissjóðir	13,2	23,2	24,8	48,8	12,8	54,4	24,3	46,5	5,2	253,1
Verðbréfa- og fj.sjóðir	11,4	14,8	11,6	5,8	6,3	4,5	13,9	13,6	0,5	82,5
Bankar og sparisjóðir	4,6	6,9	2,7	2,2	4,0	2,8	1,1	0,7	0,0	24,9
Bankar í slitameðferð	5,0	5,9	6,3	5,3	2,1	4,8	6,7	0,7	1,4	38,2
Aðrir	26,9	12,4	9,8	10,9	1,2	2,2	15,8	12,6	17,3	109,1
Nafnverð alls (ma.kr.)	88,0	67,6	66,3	97,0	29,3	95,7	62,3	75,3	34,2	615,5

Heimild: Lánamál ríkisins

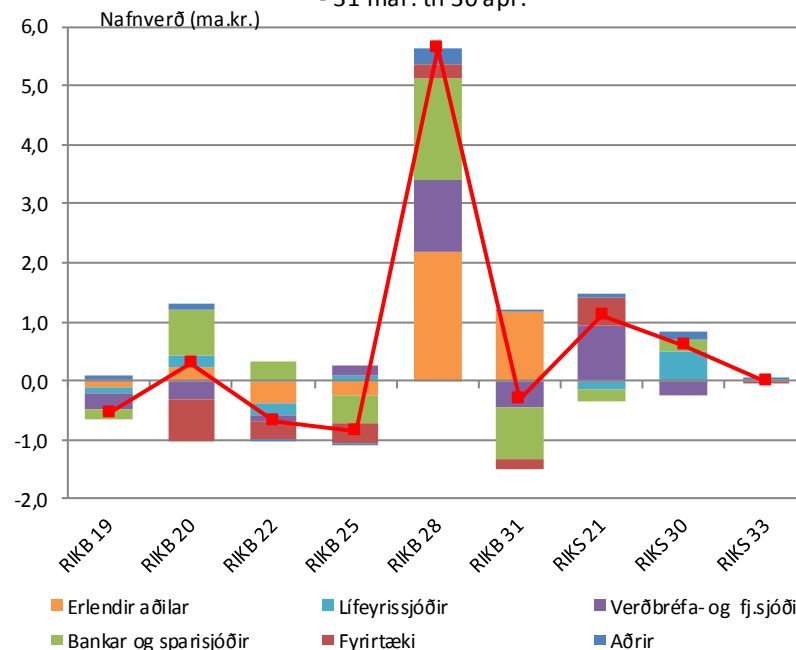
Eigendur ríkisverðbréfa

-30 apr. 2017



Breyting milli mánaða

- 31 mar. til 30 apr.

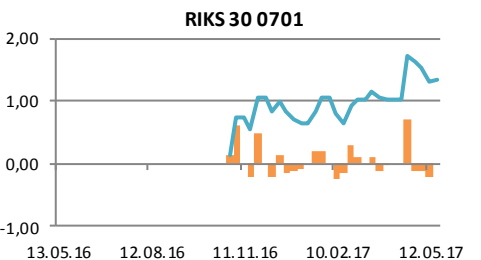
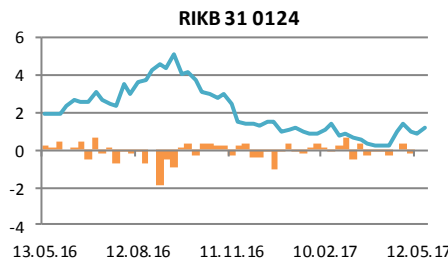
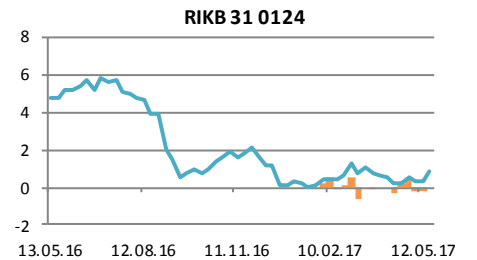
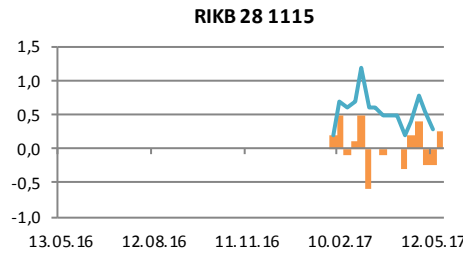
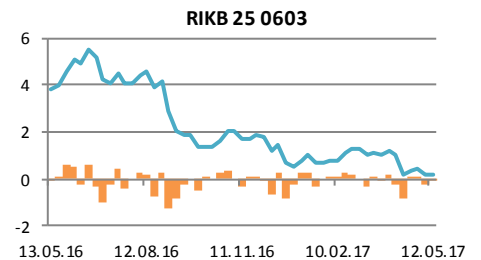
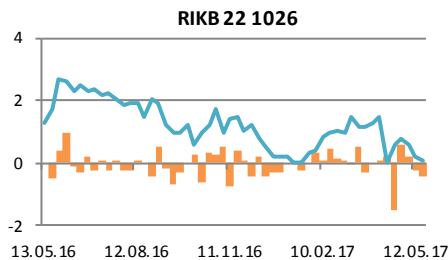
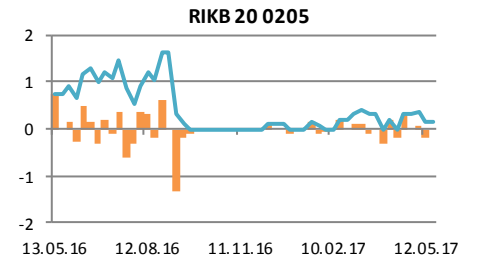
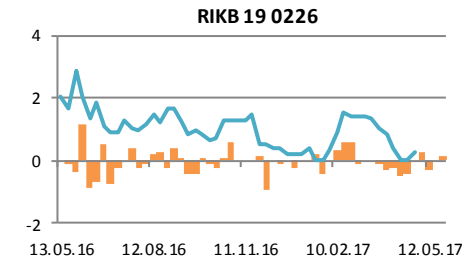
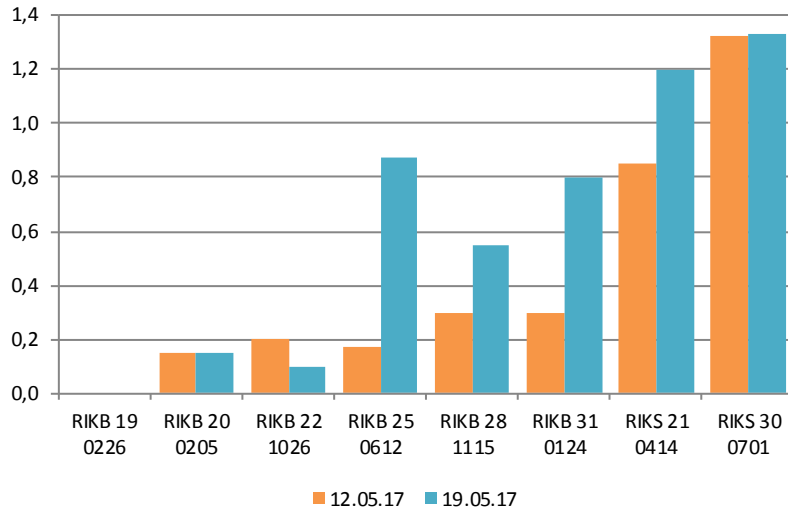


Staða verðbréfalána

Flokkur	Nafnverð (m.kr.)	Breyting síðan				
		1V	4V	12V	26V	52V
RIKB 19 0226	0,0	0,0	0,0	-1,5	-1,3	-2,0
RIKB 20 0205	0,2	-0,2	0,2	-0,1	0,2	-0,6
RIKB 22 1026	0,2	-0,4	0,2	-0,8	-1,2	-1,1
RIKB 25 0612	0,2	-0,1	-0,1	-0,9	-1,5	-3,7
RIKB 28 1115	0,3	-0,3	0,1	-0,3	0,3	0,3
RIKB 31 0124	0,3	0,0	0,1	-0,1	-1,3	-4,5
RIKS 21 0414	0,9	-0,1	0,6	-0,5	-1,6	-1,1
RIKS 30 0701	1,3	-0,2	0,3	0,7	0,6	1,3

Heimild: Lánamál Ríkisins

Breyting milli vikna



Breyting milli vikna

Útistandandi



Innihald og form skjals þessa er unnið af starfsmönnum Hagfræðideildar Landsbankans hf. (hagfraedideild@landsbankinn.is) og byggist á aðgengilegum opinberum upplýsingum á þeim tíma sem greiningin var unnin. Mat á þeim upplýsingum endurspeglar skoðanir starfsmanna Hagfræðideildar Landsbankans á þeim degi þegar greiningin er dagsett, en þær geta breyst án fyrirvara.

Landsbankinn hf. og starfsfólk hans taka ekki ábyrgð á viðskiptum sem byggð eru á þeim upplýsingum og skoðunum sem hér eru settar fram.

Bent skal á að Landsbankinn hf. getur á hverjum tíma haft beinna eða óbeinna hagsmuna að gæta, ýmist sjálfur, dótturfélög hans eða fyrir hönd viðskiptamanna, s.s. sem fjárfestir, lánardrottinn eða þjónustuaðili. Greiningar eru engu að síður unnar sjálfstætt af Hagfræðideild Landsbankans og innan Landsbankans eru í gildi reglur um aðskilnað starfssviða sem eru aðgengilegar á vef bankans.

